



**MARTIN
COMMERCIAL
GROUP**
Commercial Real Estate Services

AVAILABLE FOR LEASE

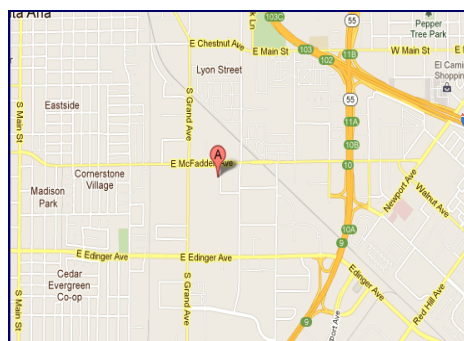
8,442 SQ. FT. FREE STANDING INDUSTRIAL BUILDING WITH FENCED YARD



1220 S. WRIGHT STREET ~ SANTA ANA

Features:

- Aprox. 1,500 Sq. Ft. Offices
- Reception, Three (3) Private Offices, Bullpen
- Additional 1,500 Sq. Ft. Bonus Mezzanine
- Kitchen / Breakarea
- Truck Well With 14'x14' Loading Door
- Two (2) 14'x14' GL Loading Doors
- 18' Warehouse Clearance
- 400 Amps 3P 110/208V Power (Verify)
- Large Fenced Yard
- Easy Access to the 55, 5, 405, & 22 Fwys.
- Local Property Management



**For More Information
Please Contact:**

LORI MCAMIS

lmcamis@mcgre.com
DRE # 01873441

SAM GREEK

sgreek@mcgre.com
DRE # 01240614

714.241.1141

1495 E. Warner Avenue
Santa Ana, CA 92705

*Since 1953...
Orange County ~ Inland Empire*

The information contained herein has been obtained from sources we deem reliable. While we have no reason to doubt its accuracy, we do not guarantee it.



MARTIN
COMMERCIAL
GROUP

Commercial Real Estate Services



For More Information
Please Contact:

LORI McAMIS

lmcamis@mcgre.com
DRE # 01873441

SAM GREEK

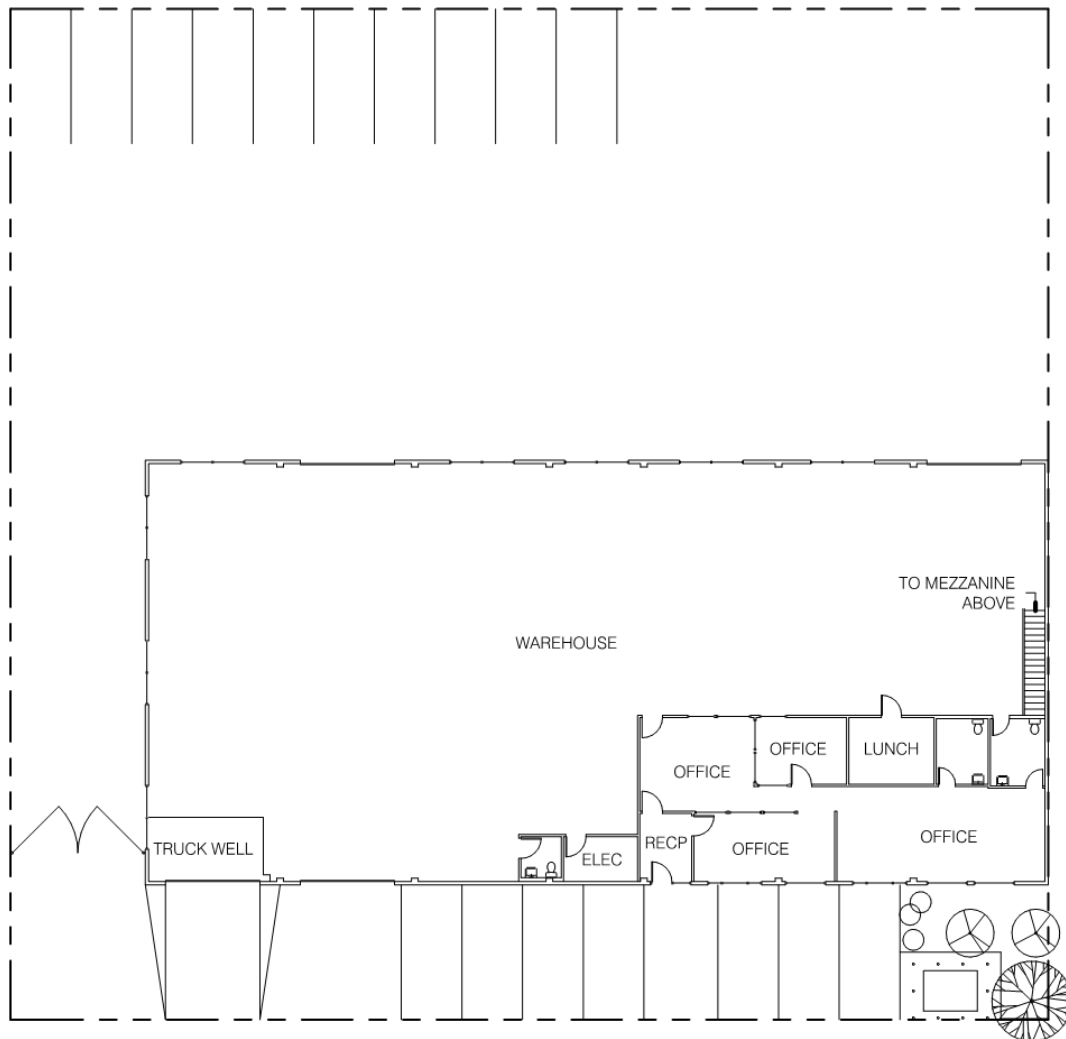
sgreek@mcgre.com
BRE # 01240614

714.241.1141

1495 E. Warner Avenue
Santa Ana, CA 92705

*Since 1953...
~Orange County~*

**1220 S. Wright Street, Santa Ana CA
8,442 Sq. Ft.**



8,442 SF - GROSS
1,500 SF - OFFICE

SOUTH WRIGHT STREET

WWW.MCGRE.COM

CORPORATE OFFICE: 1495 E. WARNER AVENUE ~ SANTA ANA, CA 92705

ORANGE COUNTY: 714.241.1141 INLAND EMPIRE: 951.684.1251