



**MARTIN
COMMERCIAL
GROUP**
Commercial Real Estate Services



AVAILABLE FOR LEASE

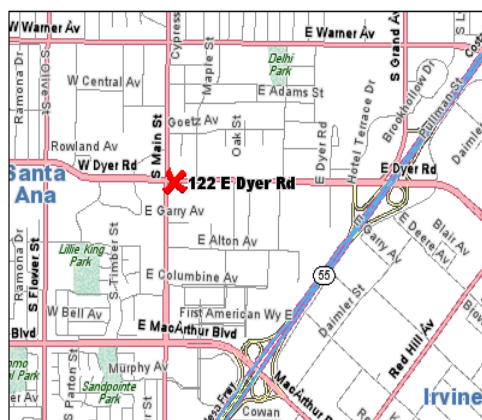
14,170 SQ. FT. FREE STANDING INDUSTRIAL BUILDING



122 EAST DYER ROAD ~ SANTA ANA

Features:

- Newer High Image Building
- Reception & Two Private Offices With Central HVAC
- Three (3) 12'x12' GL Loading Doors
- 400A 3P 120/208V (Expandable)
- Fire Sprinklers
- Easy Access to 55, 5, 405, & 22 Freeways
- Major Street Frontage
- Professionally Managed



**For More Information
Please Contact:**

SAM GREEK

sgreek@mcgre.com
DRE # 01240614

LORI McAMIS

lmcamis@mcgre.com
DRE # 01873441

714.241.1141

1495 E. Warner Avenue
Santa Ana, CA 92705

*Since 1953...
Orange County ~ Inland Empire*

The information contained herein has been obtained from sources we deem reliable. While we have no reason to doubt its accuracy, we do not guarantee it.



MARTIN
COMMERCIAL
GROUP

Commercial Real Estate Services



For More Information
Please Contact:

SAM GREEK

sgreek@mcgre.com
DRE # 01240614

LORI McAMIS

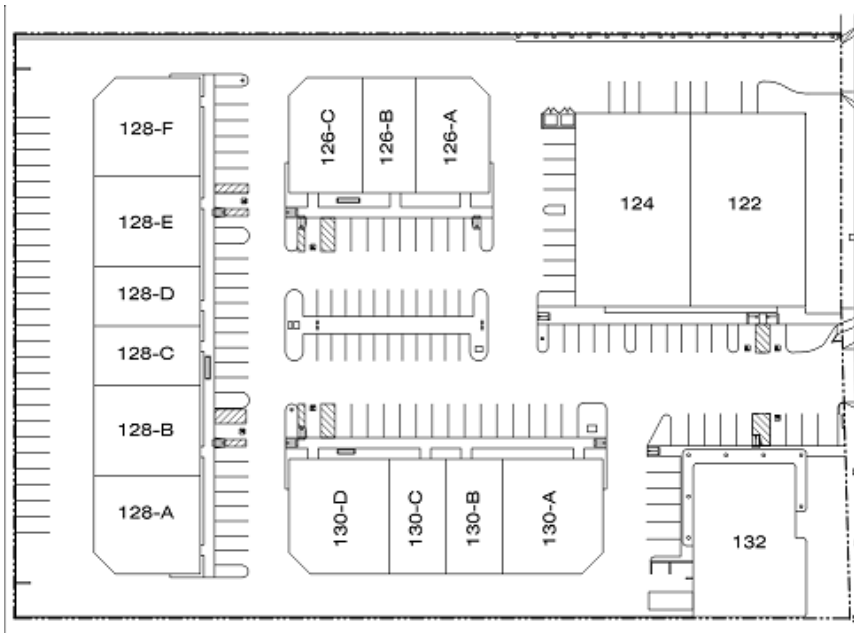
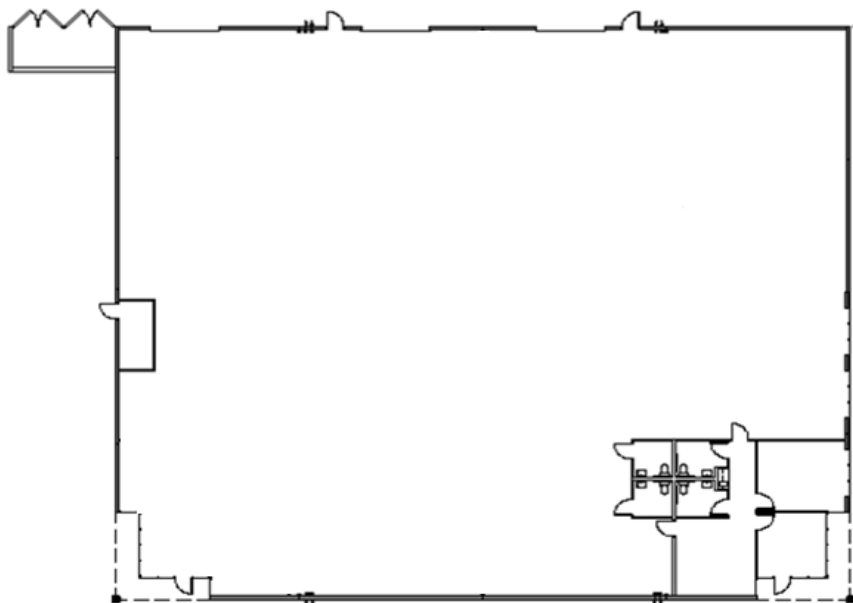
lmcamis@mcgre.com
DRE # 01873441

714.241.1141

1495 E. Warner Avenue
Santa Ana, CA 92705

Since 1953...

**122 E. Dyer Road, Santa Ana, CA
14,170 Sq. Ft.**



WWW.MCGRE.COM