



**MARTIN
COMMERCIAL
GROUP**

Commercial Real Estate Services

AVAILABLE FOR LEASE

**18,300 SQ. FT. FREE STANDING INDUSTRIAL BUILDING
TRUCK WELL & KRAEMER BOULEVARD FRONTAGE**



1080 N. KRAEMER PLACE ~ ANAHEIM

Features:

- Approx. 1,700 Sq. Ft. Offices:
- Reception, 1 Open Work Space (1st Floor)
- Open Work Space, 2 Offices (2nd Floor)
- Kraemer Blvd. Visibility
- Fire Sprinklers
- 225A 3Phase 120/240V (Verify)
- 20' Warehouse Clearance
- Two Position Truck Well 12'x16' Loading Doors
- One (1) 12'x14' GL Loading Door
- One (1) 12'x10' GL Loading Door
- Easy Access to the 91, 55 & 57 Freeways
- Professionally Managed



**For More Information
Please Contact:**

SAM GREEK

sgreek@mcgre.com
DRE # 01240614

ERIN LAGOMARSINO

elagomarsino@mcgre.com
DRE # 00992436

714.241.1141

1495 E. Warner Avenue
Santa Ana, CA 92705

*Since 1953...
Orange County ~ Inland Empire*

The information contained herein has been obtained from sources we deem reliable. While we have no reason to doubt its accuracy, we do not guarantee it.

WWW.MCGRE.COM

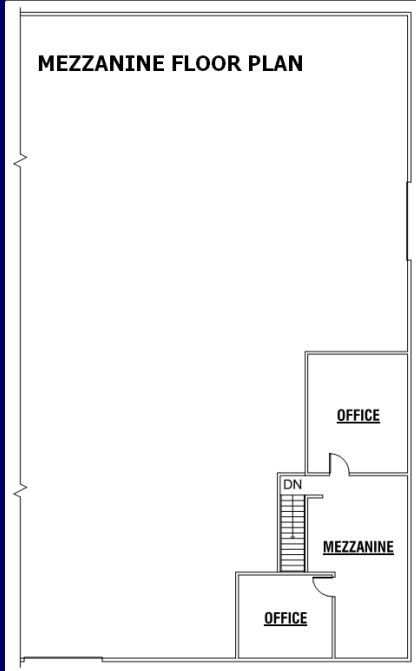


**MARTIN
COMMERCIAL
GROUP**
Commercial Real Estate Services

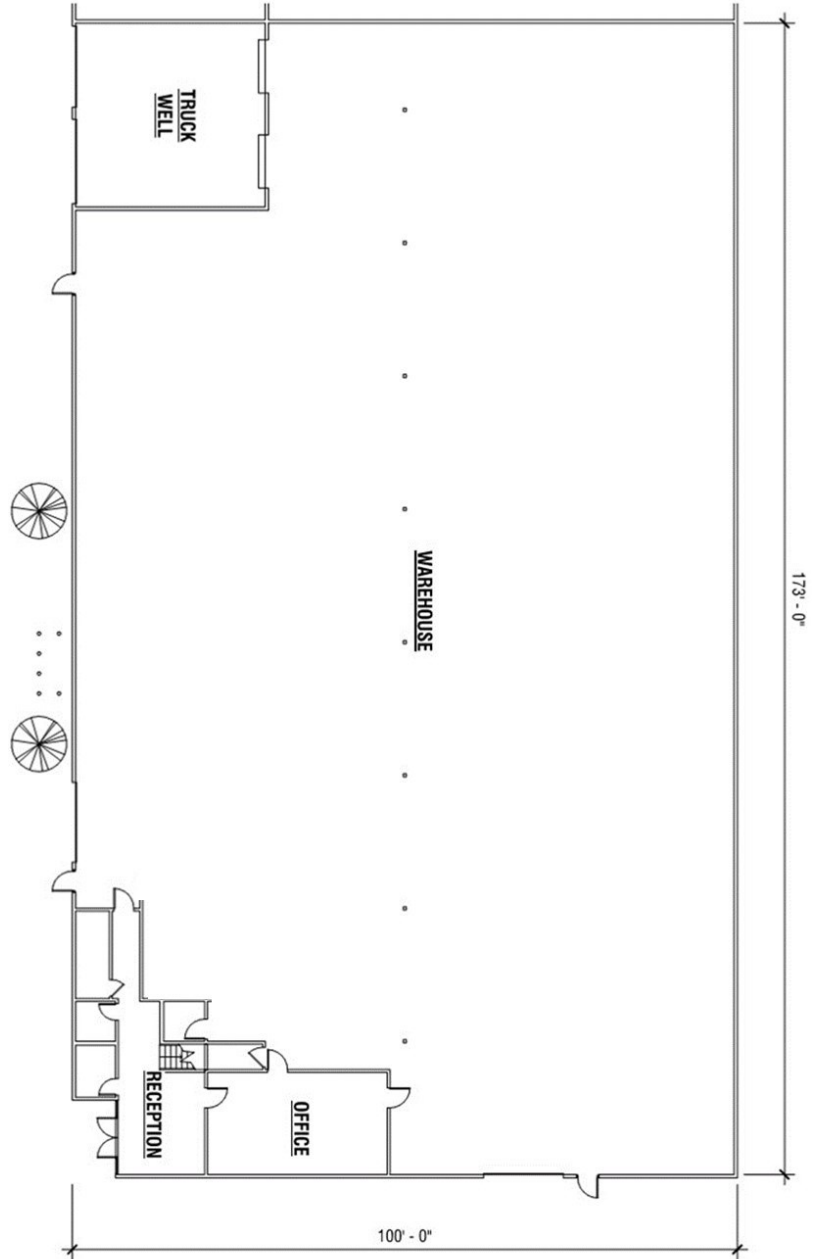
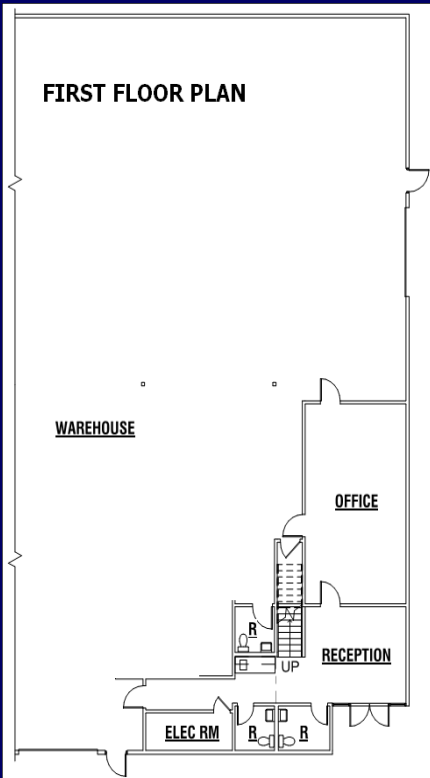


1080 N. Kraemer Place, Anaheim, CA 18,300 Sq. Ft.

MEZZANINE FLOOR PLAN



FIRST FLOOR PLAN



WWW.MCGRE.COM